

LPA 20

Reliable printing and labeling



Go to product page



Setting the standard for over 30 years

The first systems of the series are still in industrial use today. Some have already printed well over 200 million labels – and continue to operate with outstanding reliability.



Florian Mehl
Managing Partner

✓ Quality

The quality of our price labeling systems is evident not only in their solid construction, designed for maximum longevity, but also in the consistently precise print image of the labels.

✓ Reliability

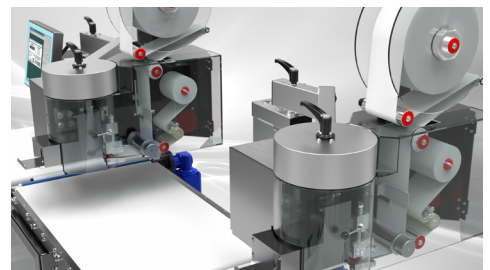
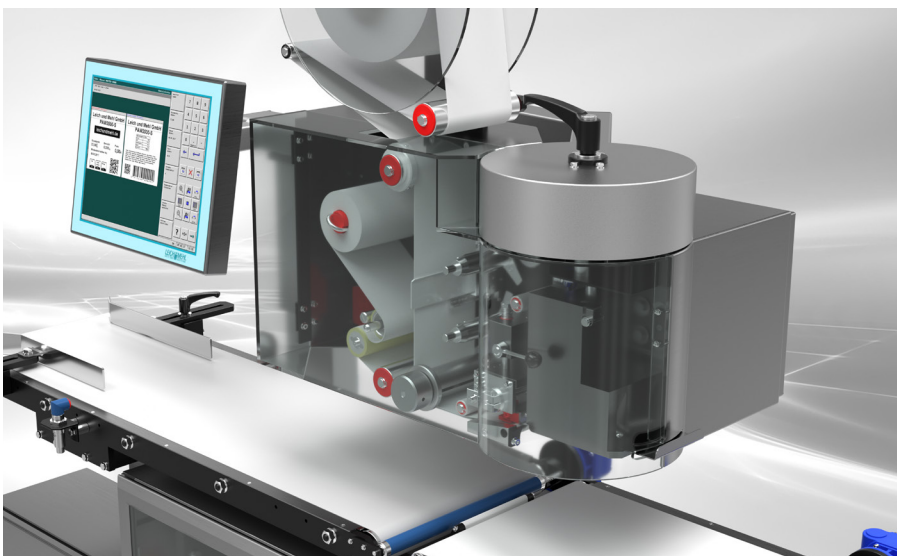
Low wear and tear ensures maximum reliability. Our customers appreciate the resulting minimal downtime and low maintenance costs.

✓ Customer Satisfaction

Our systems are flexibly adapted to meet a wide range of customer requirements. In doing so, we set standards – even beyond standard applications!

✓ Sustainability

In developing our systems, we place particular emphasis on sustainability. Both resource consumption and the durability of all wear parts – and the system as a whole – are optimized. You can count on it.



Flexible in Use

The LPA20 is a label printer and applicator with its own control unit, designed for industrial use.

Labeling can be applied to the top and/or bottom of the package. Optional lateral labeling is also possible.

Label design can be carried out directly on the unit using the integrated graphic mode or optionally on a PC using the LANScale Designer.

The current label layout is displayed.



✓ Convincing in terms of quality

- All structural components are designed for maximum stability and durability.
- Robust, industrial-grade design made of non-corrosive materials.

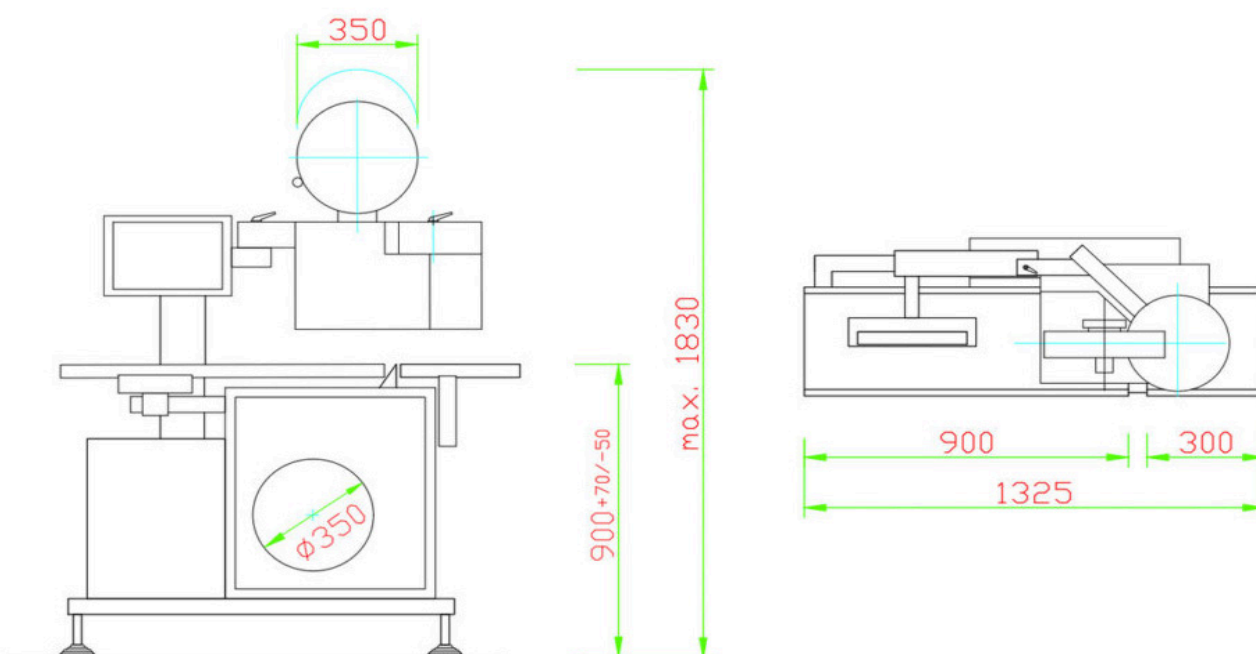
✓ Modern Technology

- Large 15" touchscreen
- Control based on industrial PC
- Network-compatible via Ethernet (TCP/IP)
- Remote control and remote maintenance module available
- Open XML interface allows seamless integration into ERP systems
- Optional OPC-UA interface available

✓ Professional Label Design

- Central article and label management for all connected printers
- Unicode-capable
- Logos can be integrated at any time in any number
- All fonts (TrueType fonts) in any font size
- All common barcodes available (including 2D codes)

Application	Print & Apply-System
Output	Up to 250 labels/min depending on label length and quality
Printing Method	Thermal direct optional: thermal transfer
Resolution	8 dot/mm optional: 12 dot/mm
Print Width	104 mm
Print Speed	Up to 300 mm/s
Labeling technology	Air-jet applicator (input pressure 6 bar) optional: mechanical or vacuum belt applicator (from below)
Label format	Length: 35 - 110 mm, width: 35 - 110 mm optional length: up to 180 mm
Roll Diameter	Up to 350 mm
Running Direction	→ or ←
Working Height	Adjustable
Machine Length	According to requirements
Conveyor Dimensions	Belt width: 300 mm optional: 400/530 mm Belt length: according to requirements
Product detection	Photoelectric sensor positioned horizontally or diagonally
Interfaces	RS 232C, RS 422/485, Ethernet (TCP/IP) Other interfaces on request
Power Supply	230 V, 50 Hz
Connected Load	Approx. 1 kVA



Practical Example: LPA20