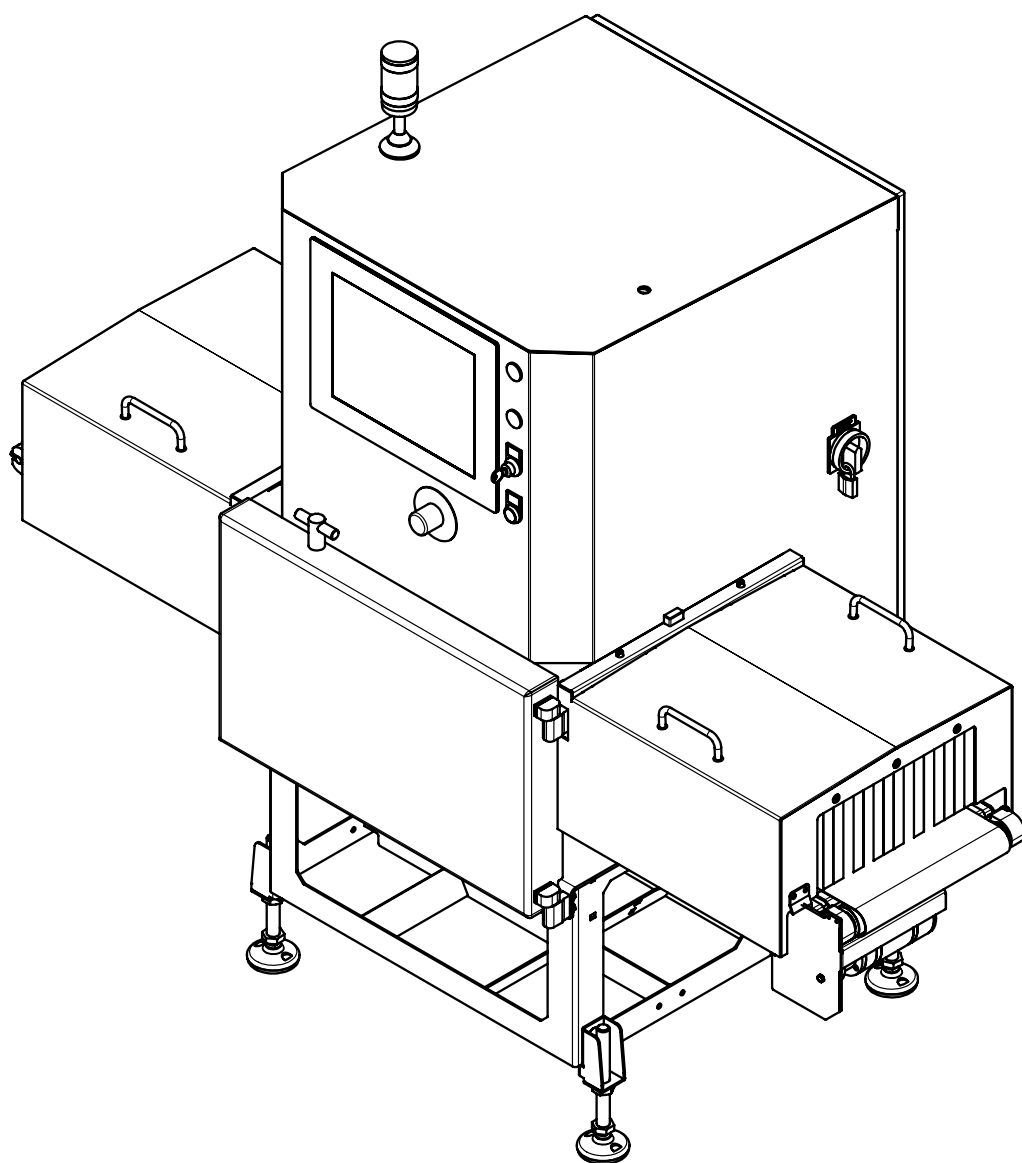


# SC-E

TECHNICAL DATA

**X-RAY**



# HIGH-TECH X-RAY SCANNER FOR PROFESSIONAL DETECTION OF CONTAMINANTS

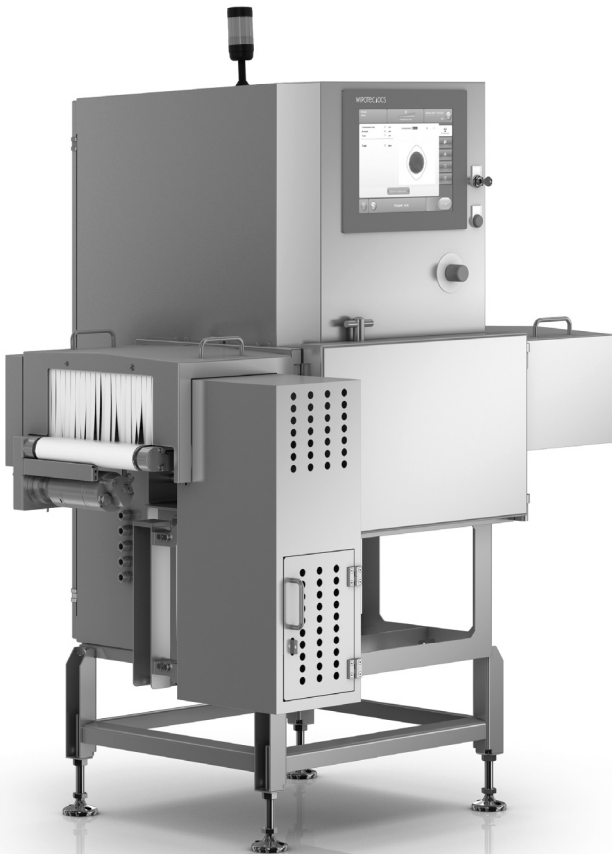
SC E

The X-ray scanners of the **SC-E** family are the perfect entry to the world of ultra-modern X-ray inspection systems and the associated high quality product line of WIPOTEC-OCS. Designed and developed to meet the most stringent requirements of foreign body detection, with optional comprehensive software packages, the scanners become excellent all-rounder that reliably perform, completeness, fill level and form check, as well as mass determination. Together with the intelligent software tool (optional) for hiding packaging clips, the SC-E proves to be an exemplary inspection system.

Compact in their construction, the scanners of the SC-E family include a Diode Array Detector with a 0.4 mm resolution (0.8 mm by request), even in the basic version. The machines are very easy to integrate in any existing production line. All of the X-ray scanners from WIPOTEC-OCS have the same familiar and convenient user interface found in the checkweigher line.

The system is controlled from a 15" colour TFT display with touchscreen panel that always shows the current X-ray image. Designed for protection class IP65 with full stainless steel construction, the system features a balcony design and sloped surfaces that, together with the C-shaped product area, enable thorough cleaning quickly and easily. All scanners meet the most stringent standards of hygiene.

The SC-E product series is more than a good investment for all users who are looking for highly professional foreign body detection. It represents a well-engineered, technical and economical solution at a highly competitive price.



## KEY FEATURES

- ✓ Compact design
- ✓ Diode Array Detector with 0.4 mm resolution (0.8 mm by request)
- ✓ Comprehensive software package (optional)
- ✓ Numerous sorting systems (optional)
- ✓ For all primary and secondary packaging up to medium size

## YOUR BENEFITS

- ✓ Reliable all-rounder for optimal productivity
- ✓ Compact design for easy integration

# TECHNICAL DATA

SC E

## X-RAY SOURCE

	SC-E-3000	SC-E-4000
X-ray type	X-ray unit	
Output	max. 200 W	
HV-Voltage (infinitely variable)	max. 80 kV (electronically limited)	
HV-Current (infinitely variable)	max. 3 mA	
Cooling system	Temperature range (standard): control cabinet fan Temperature range (optional): additional cooling unit	

## X-RAY SENSOR

	SC-E-3000	SC-E-4000
Sensor technology	Diode array	
Resolution	0.4 mm (0.8 mm on request)	
Scanning speed	50 m/min (optional 90 m/min)	

## ANTRIEB DRIVE

	SC-E-3000	SC-E-4000
Drive	I-Mot3   777-G8-SW	
Gear ratio	8	
max. transport weight	10 kg	

## HMI

	SC-E-3000	SC-E-4000
Display	15" Color-TFT with touchscreen	
Available languages	Danish, Dutch, English, Finnish, French, German, Hungarian, Italian, Norwegian, Polish, Portuguese, Russian, Slovak, Spanish, Swedish, Turkish, (other languages on request)	

# TECHNICAL DATA

SC E

## AMBIENT CONDITIONS

	SC-E-3000	SC-E-4000
<b>Relative humidity</b>	20 to 80 % (not condensing)	
<b>Temperature range</b>	+5 to +35 °C (optional +5 to +40 °C)	

## FURTHER INFORMATION

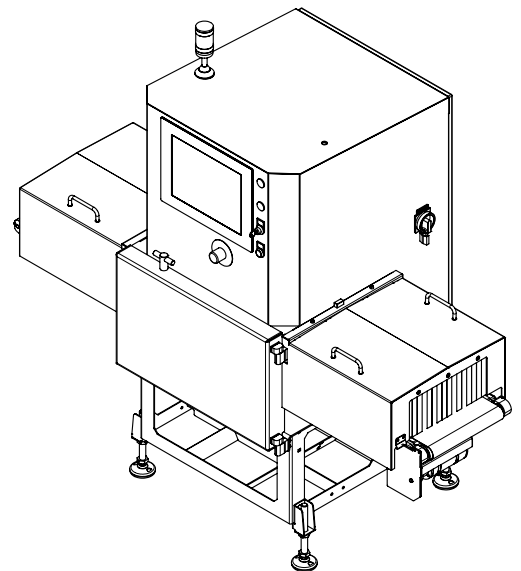
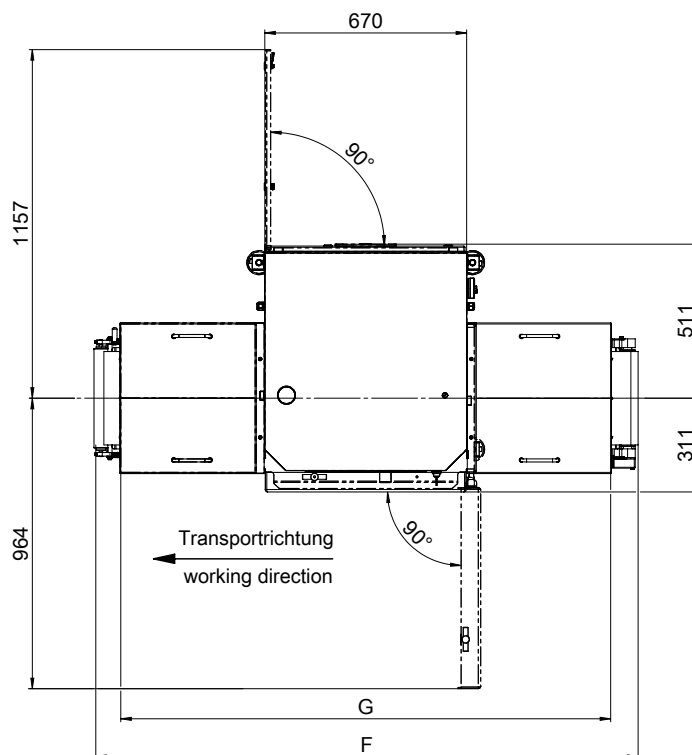
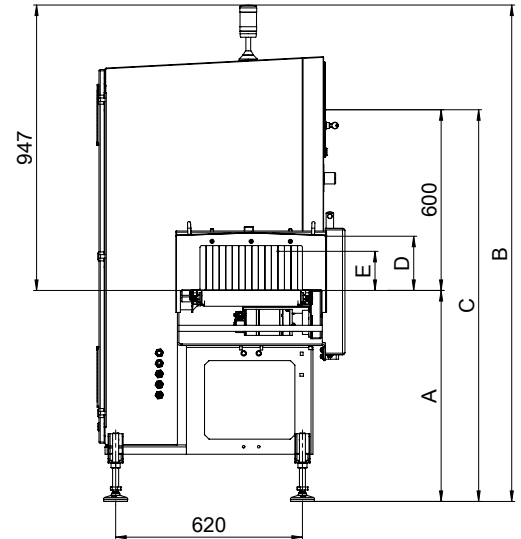
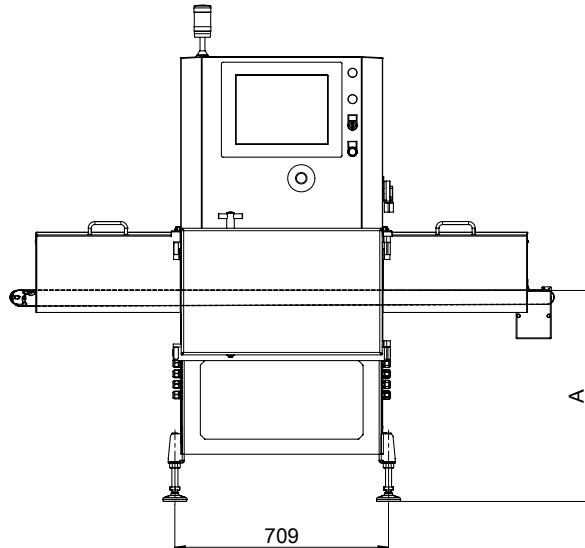
	SC-E-3000	SC-E-4000
<b>Hygiene design</b>	completely constructed in stainless steel product area easy to clean (C-shape) IMOT servo motor technology on the conveyor belt	
<b>Protection class</b>	IP65 (except fans on the control cabinet door and on the core segment)	
<b>Power supply<sup>1</sup></b>	230 VAC (optional 150 VAC) 50/60 Hz 2.4 kVA	
<b>SCCR</b>	5 kA	
<b>Weight (depending on the equipment)</b>	ca. 400 kg (depending on variant)	
<b>Product storage</b>	100 products, expandable	

<sup>1)</sup> Connection via a separate supply line fused with 10 A.

# MACHINE DIMENSIONS

## SC-E-3000

SC E



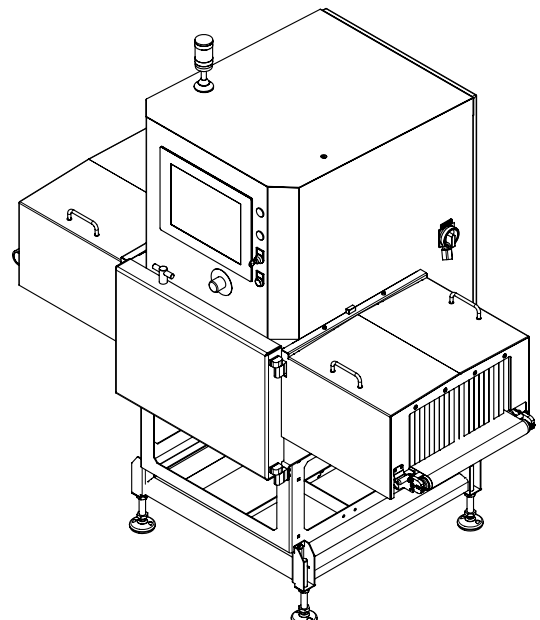
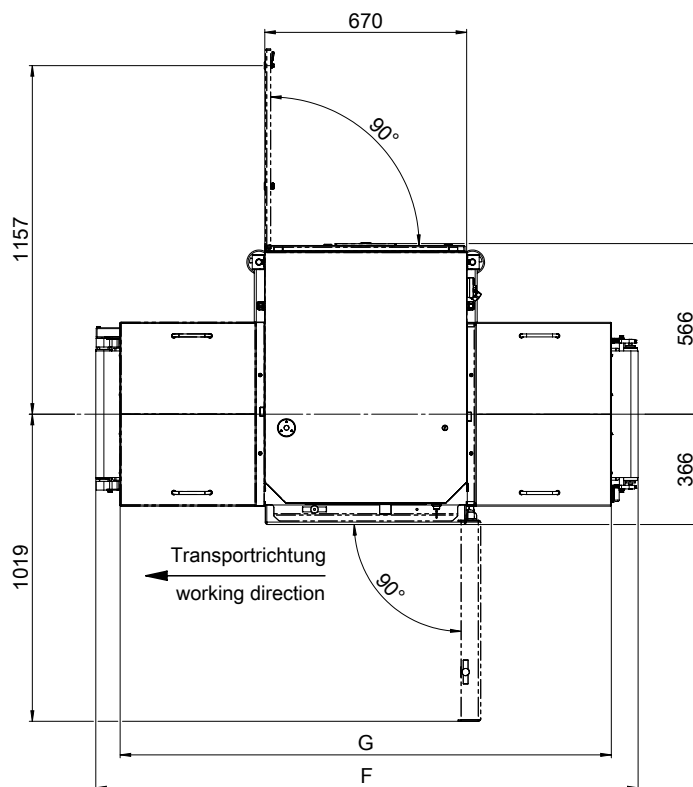
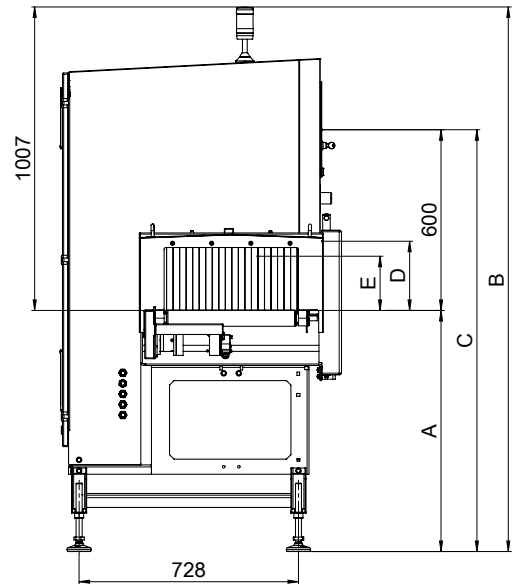
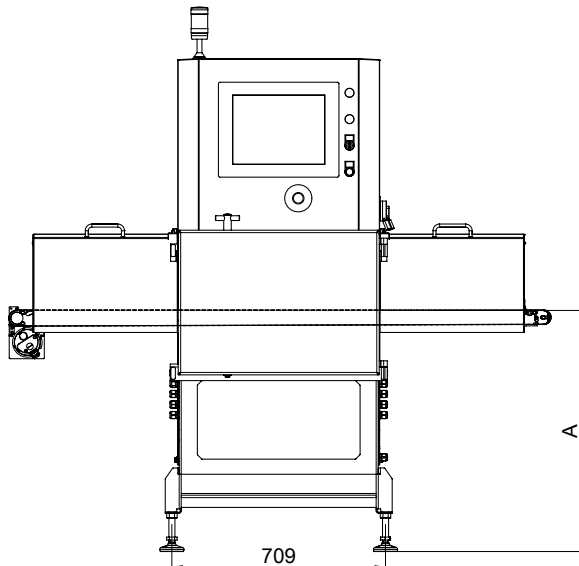
<b>A = Transport height</b>	750-850 / 850-950 mm
<b>B = Total height</b>	947 mm + A
<b>C = HMI-Center</b>	600 mm + A
<b>D = Clearance height</b>	180 mm
<b>E = max. product height</b>	130 mm
<b>F = Transport length</b>	800 / 1,500 / 1,800 mm
<b>G = Total length with hood</b>	734 / 1,330 / 1,630 mm

These specifications are reference values of the standard machine excluding application- or weighing-specific add-on parts.  
All entries in mm | Drawing shows design example

# MACHINE DIMENSIONS

## SC-E-4000

SC E



<b>A = Transport height</b>	750-850 / 850-950 mm
<b>B = Total height</b>	947 mm + A
<b>C = HMI-Center</b>	600 mm + A
<b>D= Clearance height</b>	180 mm
<b>E= max. product height</b>	1.830 mm
<b>F = Transport length</b>	800 / 1,500 / 1,800 mm
<b>G = Total length with hood</b>	734 / 1,330 / 1,630 mm

These specifications are reference values of the standard machine excluding application- or weighing-specific add-on parts.  
All entries in mm | Drawing shows design example

This image shows a single sheet of white paper with horizontal ruling lines. The lines are evenly spaced and extend across the width of the page. There are no margins, text, or other markings on the paper.